



For live Tech Support:
Call Certified Tracking Solutions
1.780.391.3800
Toll Free **1.855.287.4477**
8AM to 5PM
Monday to Friday MST

STEP 1 Determine Installation Type and Options

Depending upon the requirements, the AC50GPS module can be installed in two ways.

- Type1 – **without** starter kill
- Type2 – **with** starter kill

STEP 2 Complete the wire connections according to the selected installation type

Please see the following pages for detailed instructions and wiring diagrams.

- Red:** 12 Volts (+) Constant
- White:** Ignition (+) (MUST be a true ignition source)
- Black:** Ground
- Green:** Starter Disable Output (-)
- Yellow:** Input 1 (-) Optional

GROUND MUST BE CONNECTED DIRECTLY TO CHASSIS WITH PAINT REMOVED

STEP 3 Position the AC50GPS Module in an Optimal Location

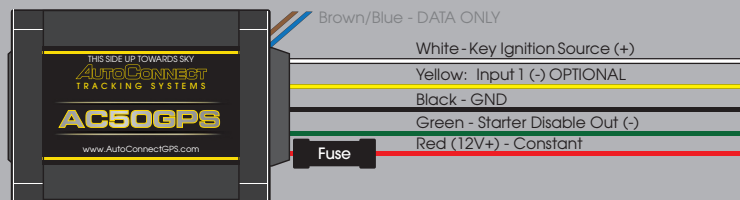
Failure to adhere to these suggestions will result in a weak cellular and/or GPS signal and will affect the performance of the device.

- Secure in upper portion of dash in a hidden location with correct side pointing skyward (label will indicate proper orientation). Example: Above instrument cluster.
- Do not cover with metal or position near any source of interference (Vehicle Radio, BCM). Keep a safe distance of at least 24".

STEP 4 Confirm LED Status

- Blue: Flashing Connected / Online ✓
- Green: 1 Flash / Second Valid GPS ✓

Type 1 AC50GPS only



For Live Tech Support:
Call Certified Tracking Solutions at
1.780.391.3800
Toll-Free **1.855.287.4477**
8AM - 5PM Monday to Friday MST

1-2-3!

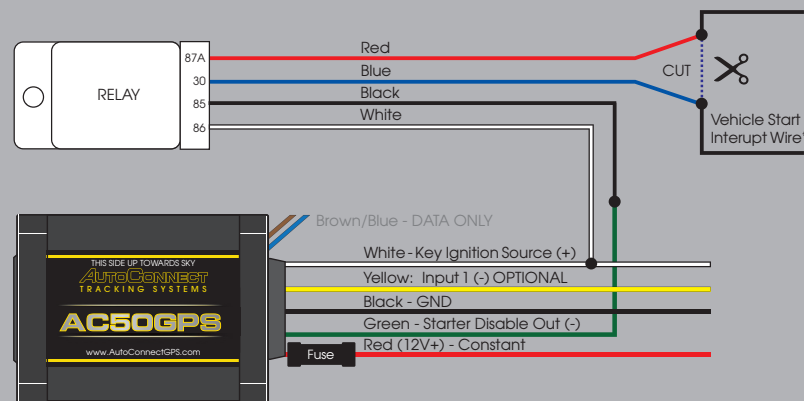
1. Connect Red wire to Constant +12V and fuse.
2. Connect Black wire to Ground.
3. Connect White wire to True Ignition (+).



ATTENTION:
Connecting the device to 24V or 12V to the
Brown or Blue wire **WILL VOID THE WARRANTY!**

Numerous installation options exist to interrupt a vehicle's start sequence. Please see one possible option below.

Type 2 AC50GPS with Starter Kill (optional)



*Vehicle Start Interrupt Wire

This is a wire that when cut the vehicle is not able to be started by a key. Due to data bus systems on newer vehicles this wire may not be at the ignition switch. When cutting a wire be sure to test that the vehicle cannot be started by key and when reconnected the vehicle starts without fault codes being displayed by the vehicle. **DO NOT CUT THE WIRE THAT WILL SHUT DOWN THE VEHICLE WHEN RUNNING BY THE KEY.**

STEP 5 Testing

It is **HIGHLY** recommended that you follow one of the test procedures below to ensure proper functionality.

Test Procedures

Call CTS to Test	a) Have the ESN# ready and call CTS to test the ignition, GPS and starter kill (if applicable)	or	For Live Tech Support: Call Certified Tracking Solutions at 1.780.391.3800 Toll-Free 1.855.287.4477 8AM - 5PM Monday to Friday MST
Self Test	b) Login to view and test the device		

1 | Confirm Vehicle Connectivity and GPS Location

a) Go to www.AutoconnectGPS.com and click on "Customer Login"



b) Enter the User Name and password for your account

c) Click "Login".

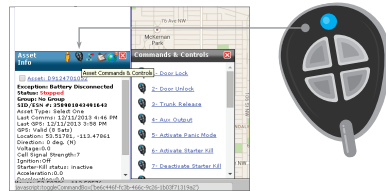


The successful completion of this section will enable you to see the current location of the device on the website.

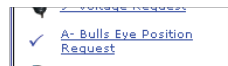
d) Click on device serial # on the left side of the screen. The asset info box will open on the bottom left corner of the screen.



e) Click on the "Asset Commands & Controls" icon located at the top of the Asset Info box



f) Click on command labeled "A - Bulls Eye Position Request". A successful completion of this command will result in a checkmark being displayed and the current time will update in the "Last Comms" section of the asset info box.



g) The vehicle icon on the map should now have a red "dot" below it. If it has an exclamation mark ("!"), it means that the device has "invalid" GPS. In this case you will need to move the vehicle outside and issue the Bulls Eye request again.



If you are still unable to see an updated location you can force a GPS position through by disconnecting the modem from the power harness for 3 minutes and then reconnecting again.

2 | Test Starter Kill Output (if applicable)

Once logged into the AutoConnect dashboard, click on the "Activate Starter Kill" command. This will generate a latching ground output from the green wire. Please see the Starter Kill wiring diagram for recommended wiring. If successful you will not be able to start the vehicle. Click on the "Deactivate Starter Kill" to allow the vehicle to start again.

IMPORTANT: If starter kill is activated while vehicle is running, vehicle should NOT shut off.

3 | Verify ignition status

Ensure the vehicle is no longer running. Once logged into the AutoConnect dashboard, click on the device serial # on the left side of the screen. The asset info box will open on the bottom left corner of the screen. Verify that the status of the ignition says "off".

For live Tech Support:
Call Certified Tracking Solutions at **1.780.391.3800**
Toll Free **1.855.287.4477**
8AM to 5PM Monday to Friday MST